

PARAMOUNT
DISABILITY HOMES



Ivanhoe East

Improved Liveability

192 Lower Heidelberg Rd Ivanhoe East VIC 3079

- | | |
|--|--|
|  Improved Liveability |  Dishwasher Included |
|  2 Participant Rooms |  Oven included |
|  Terrace Area |  Microwave Included |
|  Laundry Area |  Spacious Dining Area |
|  TV Included |  Bring Your Own Supports |
|  1 Accessible Bathroom |  Pet Friendly |



Key Features.



Images.

Location.

4 Minutes

from Ivanhoe Plaza

3 Minutes

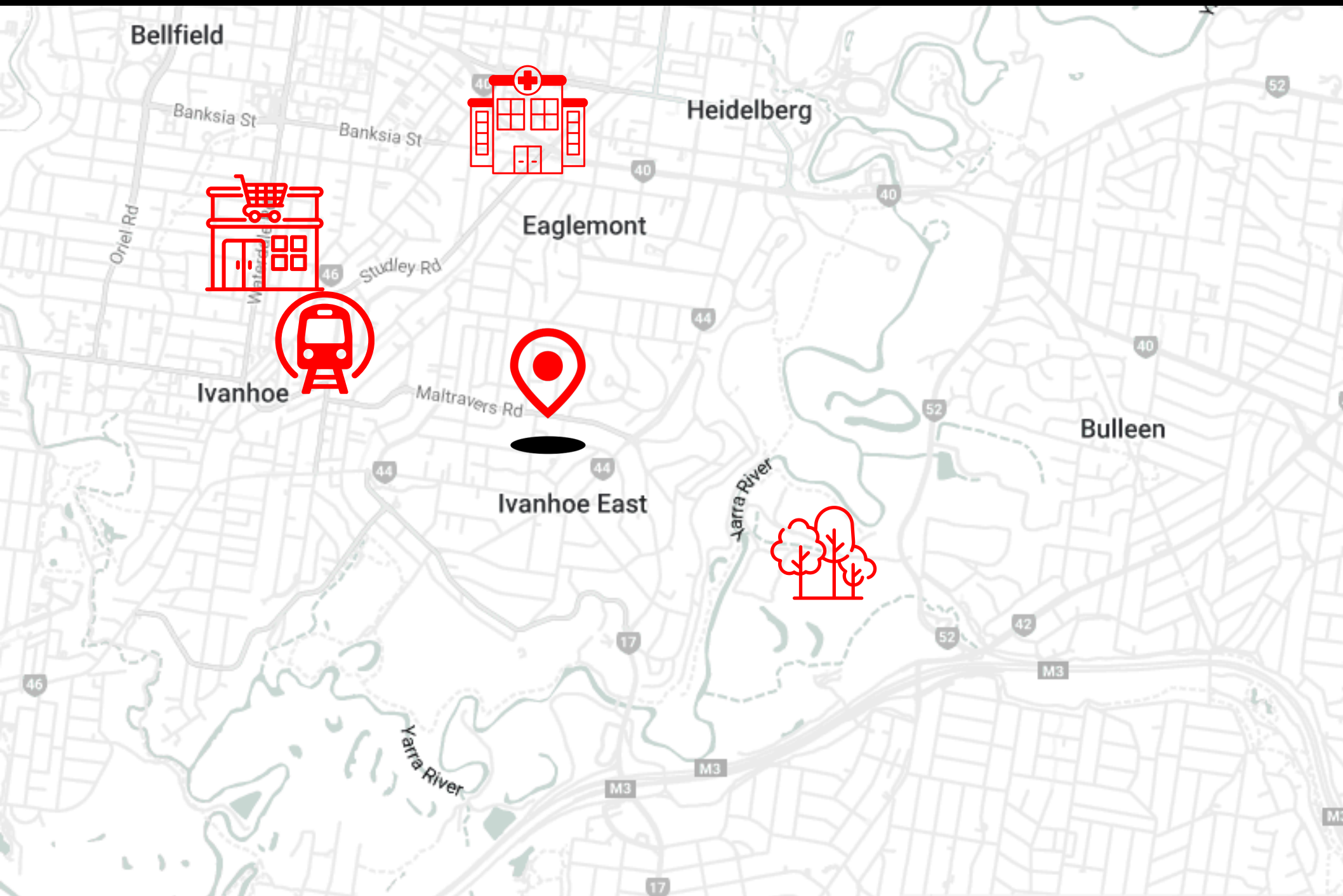
from Ivanhoe Train Station

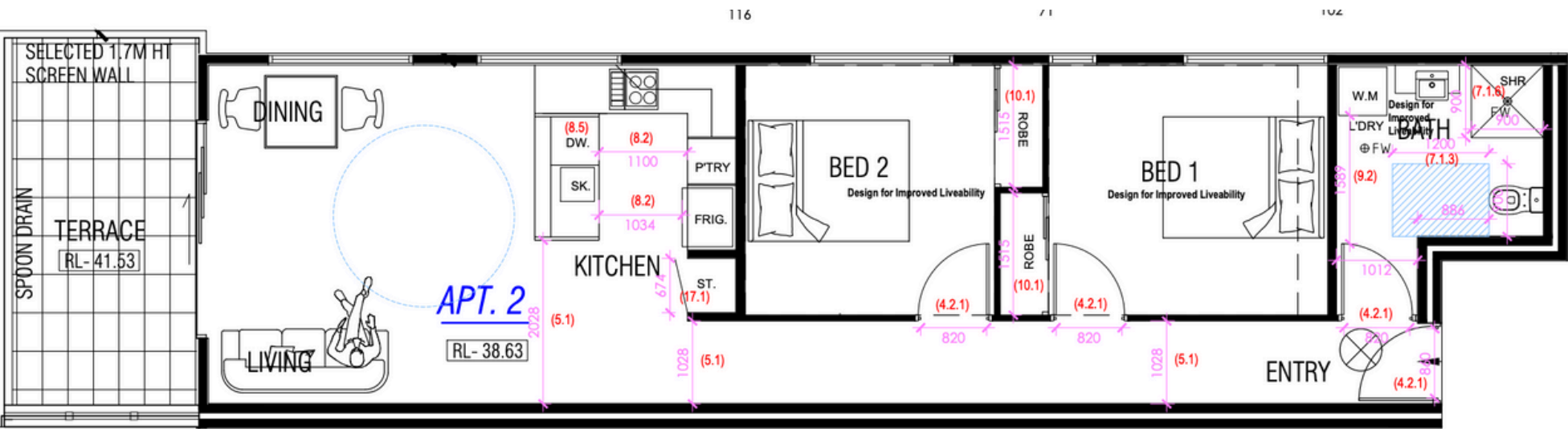
4 Minutes

from Bulleen Park

7 Minutes

from Austin Hospital



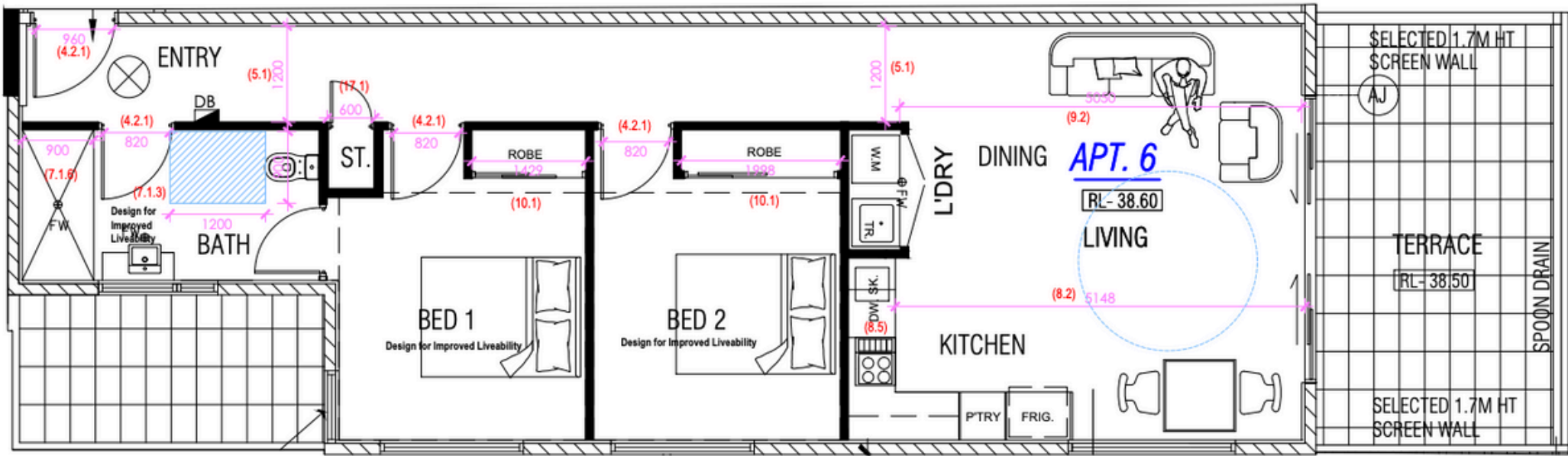


UNIT 202

Layout:

SDA property with private bedrooms, accessible bathrooms, OOA room, and open living areas.

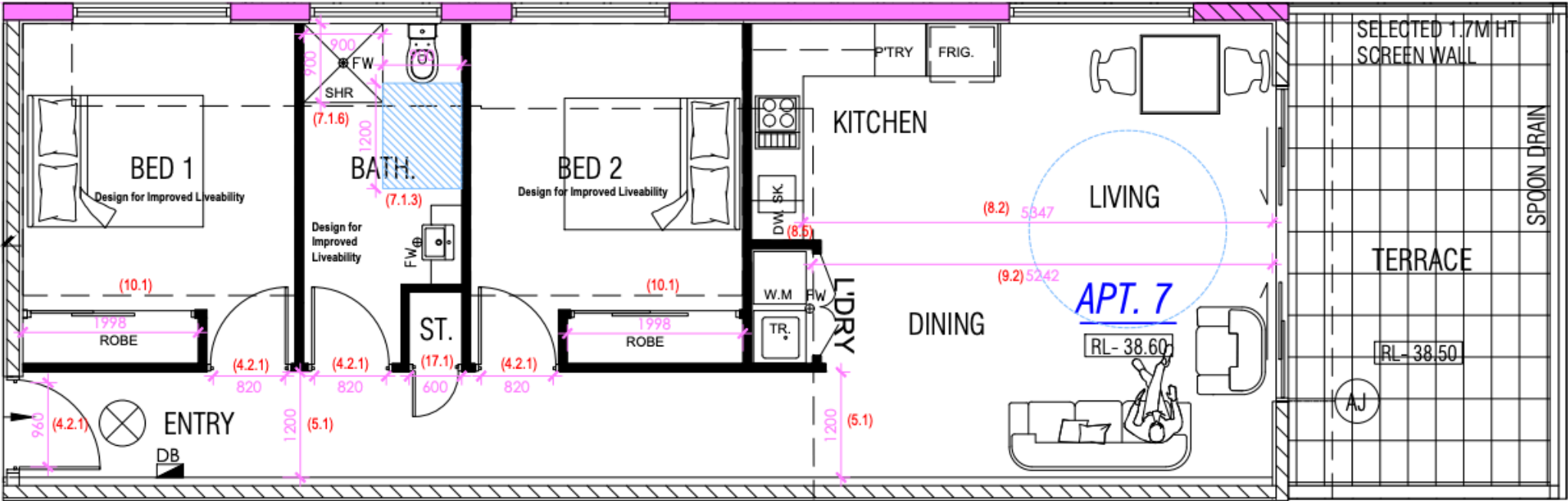
Floorplan.



UNIT 206

Layout: SDA property with private 1 bedroom, accessible bathroom, OOA room, and open living areas.

Floorplan.



UNIT 207

Layout:

SDA property with private 1 bedroom, accessible bathroom, OOA room, and open living areas.

Floorplan.

At Paramount Disability Homes, we transform lives by redefining what it means to be an SDA provider, going above and beyond for our residents.
We don't just provide housing — we create SAFE, FOREVER homes.

Contact.



4/830 WHITEHORSE ROAD, BOX HILL, 3128



(03) 9999 7418



ADMIN@PARAMOUNTHOMES.COM.AU



WWW.PARAMOUNTHOMES.COM.AU